

THE COMMUNITY BETTERMENT FOUNDATION

Winter 2021

GALA UPDATES

It was a hard decision for the CBF this year to not hold our annual Gala fundraiser in person. Our teams are extremely busy with the planning & remodel of the new eatery building and working with the architect on the Thrive Center Building as well. With these things taking precedence over events, we decided to focus on them to be able to open the eatery as soon as possible.

However, when the eatery is finished, we will be inviting all our community supporters and partners to join us for a celebration in person!

Please remember that the Gala is our main fundraiser for the year, and we still need your support! You're welcome to mail a check with the attached card, or you can donate online!

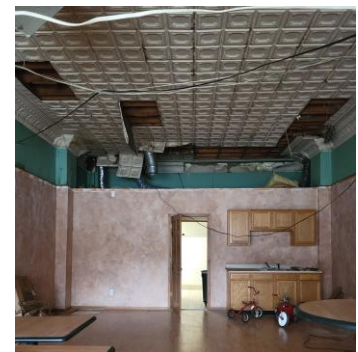
<https://www.wccbfoundation.com/donate.html>

We have a \$12,000 goal for this fundraising event and we have raised \$1,600 towards that goal.



A new vision

Our planning team and property management team have been working hard to bring the vision of Thrive Annex to life in the old Subway building. The building is being totally transformed and it's fun to watch each stage of the project as it comes to life. The team has hired Fellers Equipment out of Springfield to create the kitchen design, which will utilize the sandwich making area that Subway used. The room in the back of the building that was previously an office will be converted into a bakery space where plenty of homemade goodies will be prepped. The process is moving along slowly but we are progressing toward our goals. We have done all of the demo work, completed spray foam insulation, and installed a new HVAC system. Exposing the old metal ceilings has been the main priority of this remodel project. We are planning to paint the ceiling, but we are excited to bring this original look back to the building!



Grant Updates

We were recently approved to receive **\$492,338** in grant funds to be applied towards the Thrive Center project. Although 25% of the architect funds were released, we are still waiting for the project to move through an environmental review process before we can move to the next stage of the project.

We also applied for a grant through the Mabee Foundation, which is the same organization who issued us a grant for the Hope House Remodel, and we will be applying for the Laclede Electric Round up grant as well.

MISSION MINDED, TEAM ORIENTED

The Thrive Center mission is all about strengthening the community and families, and inspiring positive development and enduring excellence to help our local communities thrive. With our mission in mind, the CBF is currently growing their board and teams and is looking forward to what the year 2022 will hold! If you're interested in serving alongside us, please contact us!



Mountain Moving Ministry updates from Johnathan McClure

Since the men's house in Hartville has opened, they have been involved in lots of community projects and outreach. From the Celebration of Unity, the Unity Revival, speaking to kids at the school during assemblies, to volunteering at the courthouse. The men have held down jobs, paid their own bills, saved money, and families have been united. God is truly using the Hope House to clean up the streets one life at a time and the ministry is extremely appreciative of the community and church support. If you are interested in supporting the MMM Hope House please contact Johnathan McClure 573-836-2840 or send your donations to us earmarked for the MMM house.



Contact Us

**Community Betterment
Foundation, INC**
190 W Rolla St
P.O. Box 337
Hartville, MO 65667
417-300-4068
wccbfoundation@gmail.com

COMMUNITY BETTERMENT FOUNDATION, INC

190 W Rolla St
P.O. Box 337
Hartville, MO 65667